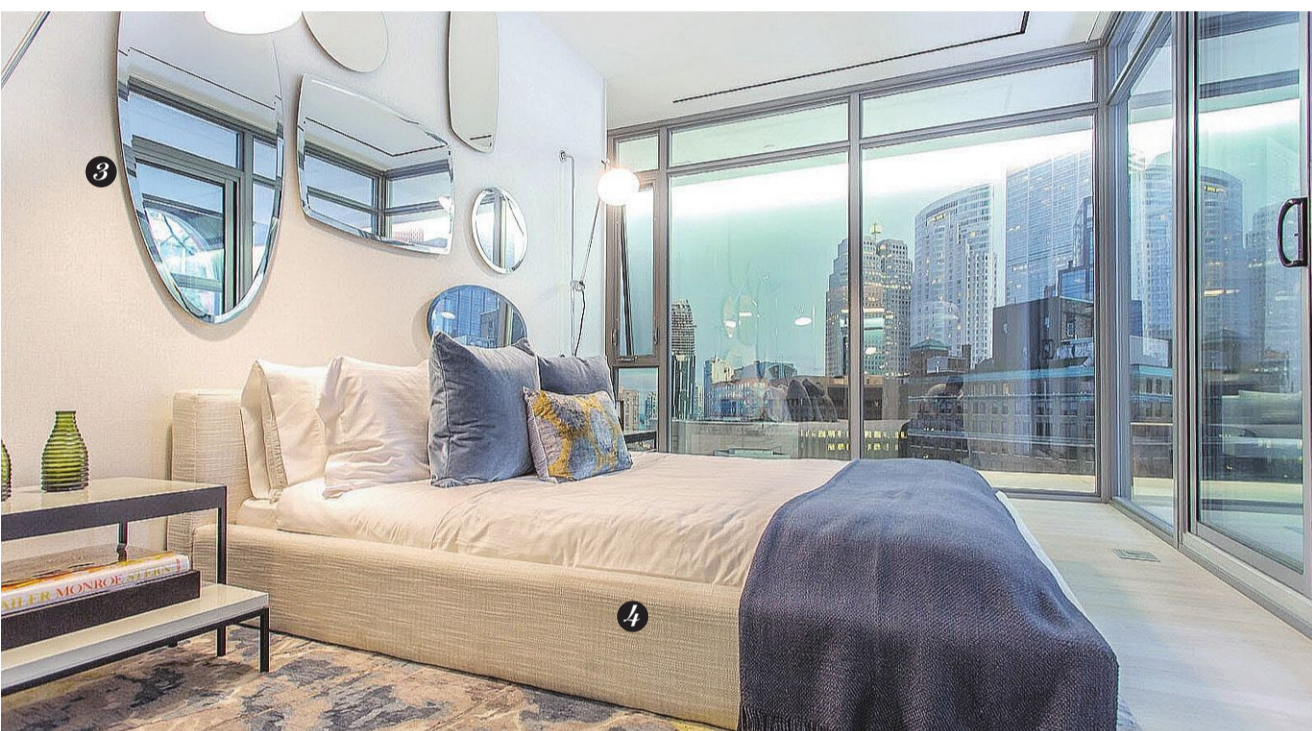
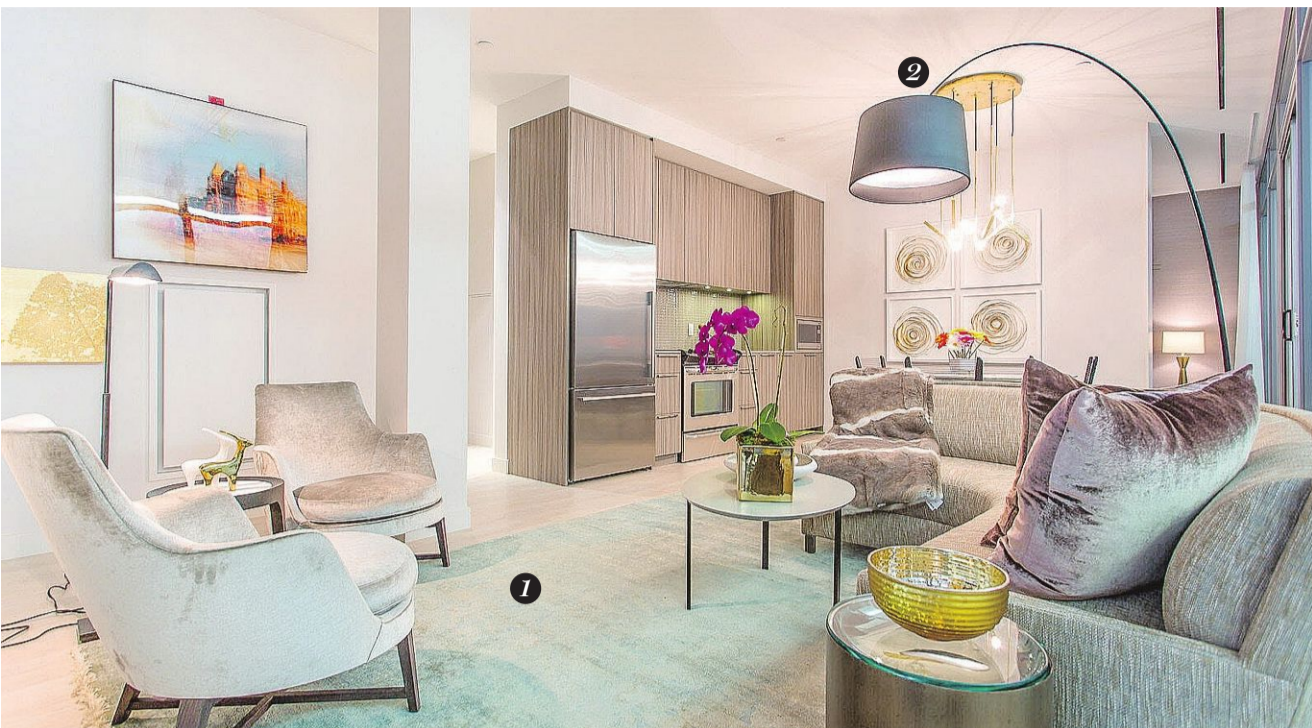


newhomes



FOR SALE

Price range: Starting from \$477,000
Location: Mayfield and Dixie roads, Brampton

MASTER PLANNED IN BRAMPTON

Mayfield Village is a low-rise master-planned community in Brampton, featuring various home types from a collection of builders, including Aspen Ridge Homes. The site is located close to Brampton transit, as well as Highways 410 and 407. **Builder/developer** Aspen Ridge Homes. (The community also features homes by CountryWide Homes, Greenpark, Marycroft Homes and Regal Crest Homes.) **Building** Townhouses and single-detached homes. **Suites** Three- and four-bedroom layouts. **Size** 1,500 to 2,500 square feet. **Occupancy** September 2016 **Features** Homes will have



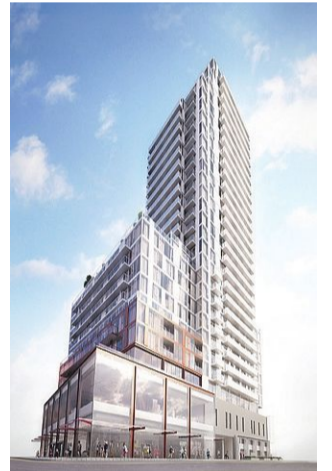
eight- and nine-foot ceilings, engineered hardwood flooring on the main floors, and oak or maple cabinetry. **Amenities** The site will feature six new parks, with playgrounds and playing fields. **Standouts** Several schools are proposed. **Sales office** Located at 4575 Mayfield Rd., Brampton. Open Monday to Thursday from 1 to 8 p.m. and weekends and holidays from 11 a.m. to 6 p.m. Call 905-230-2592 or visit aspenridge-homes.com.

L.V., National Post

Price range: \$649,900 to \$1,239,900 (new release only)
Location: Yonge Street and Eglinton Avenue, Toronto

CONDOS CLOSE TO AMENITIES

Designed by Diamond Schmitt and Turner Fleischer Architects, Whitehaus Condominiums is close to the shopping, restaurants and services of Yonge and Eglinton. It will feature interiors by Cecconi Simone. **Builder/developer** Lifetime Developments and Knightstone Capital Management. **What's new** A collection of townhouses and upper-floor penthouse suites. **Building** 29 storeys. **Suites** The units feature one-bedroom-plus-den, two-bedroom, two-bedroom-plus-den and three-bedroom layouts. **Size** 885 to 1,481 square feet. **Occupancy** Tentatively 2019. **Features** Units will have nine-foot ceilings, floor-



to-ceiling windows, pre-finished laminate flooring, quartz kitchen countertops and tile backsplashes. **Amenities** The site will have a fitness centre, an event lounge and an outdoor kitchen with barbecues. **Standouts** A subway station is located close by. **Sales office** Call 647-344-1520 or visit whitehaus.ca.

L.V., National Post

Price range: \$740,000 to \$1.8 million
Location: Kennedy Road and Major Mackenzie Drive, Markham

CONDOMINIUMS WITH A VIEW

Part of the Angus Glen community, The 6th Condominium will feature two buildings overlooking the Angus Glen Golf Club. The site will feature 176 units in total. **Builder/developer** Kylemore Communities. **What's new** The first building is nearing completion. **Building** Eight, 10 storeys. **Suites** One- to three-bedroom layouts. **Size** 913 to 1,722 square feet. **Occupancy** 90 days for the first building; Summer 2017 for the second. **Features** Nine- or 10-foot ceilings; natural stone, por-



celain tile and engineered oak hardwood flooring. **Amenities:** An exercise room, whirlpool, party room, outdoor pool and saunas. **Standouts** The project is being built to LEED Silver standards for sustainability. **Sales office:** Located at 4500 Major Mackenzie Dr., Markham. Open Monday to Thursday from 1 to 7 p.m., Friday by appointment and weekends and holidays from 11 a.m. to 6 p.m. Call 905-887-9950, visit kylemorecommunities.com.

L.V., National Post

'Aspirational'

YONGE + RICH'S MODEL SUITE IS MODERN, BUT NOT AUSTERE LISA VAN DE VEN

"Aspirational" and "urban" are words interior designer Diego Burdi uses to describe the model suite at Yonge + Rich. But he adds a third as well: "warm." "It's for somebody who's design aware but not as trend oriented," says the principal with Burdifilek. "It's modern, contemporary, but not austere." The suite layers texture and jewel-toned accents alongside carefully curated furniture, lighting and art. The result is what Burdi calls "a hierarchy of colour and finish," with key focal point features, from the dining room light fixture to the art. "The furniture is sculptural and creates a simple background," he adds. Suites at the Great Gulf site range from 718 to 1,559 square feet and start at \$474,990. The sales office, at 26 Lombard St., Toronto, is open Monday to Thursday from noon to 6 p.m. and weekends from noon to 5 p.m. Call 416-499-8883 or visit yongeandrich.com.

1 Texture takes centre stage in the living room, where Burdi features a sage silk area rug, aubergine velvet accent pillows, and this grey linen sectional sofa. "We used this particular sofa because it was soft in shape and allowed a lot of seating," Burdi adds.

3 Burdi and his team custom designed these mirrors in the master bedroom, creating a composition of shapes and sizes that acts as art above the bed. "That wall happens to face the street," he adds. "We wanted to reflect the kinetic energy of the people moving by."

2 A classic Arc lamp shines light over the living room sofa, but it's the dining room fixture that truly makes a statement. The large-scale metal pendant light fixture from Commute Design is a focal point of the space. "We wanted to do something interesting," Burdi says.

4 This queen-sized platform bed from CB2 is upholstered in linen and covered in crisp white bedding with accent pillows from Elte. To add contrast and visual interest, Burdi paired it with a patterned Elte area rug. "It looks like a water colour painting," he says.

MORTGAGE RATES 17.02.16

RATES ARE SUBJECT TO CHANGE. SELECTION OF FINANCIAL INSTITUTIONS MAY VARY WEEKLY. FIGURES SUPPLIED BY FISCAL AGENTS

	Variable rate	6months	1yr	2yr	3yr	4yr	5yr		Variable rate	6months	1yr	2yr	3yr	4yr	5yr
ATB Financial	2.60	4.00 - 4.00op	2.94 - 4.00op	2.64 - 4.00op	2.69	2.74	2.89	Tangerine	2.70	-	3.19	3.24	3.49	3.69	3.79
Alterra Bank	2.35	4.00 - 6.30op	2.85 - 6.30op	2.09	2.59	2.74	2.58	Community Trust	n/a	6.50	3.14	3.25	3.95	4.39	4.64
Alterra Savings	2.35	4.00 - 6.30op	2.85 - 6.30op	2.09	2.59	2.74	2.58	Effort Trust	n/a	4.45 - 6.30op	3.35 - 6.30op	3.50	3.70	4.30	4.35
Bank of Montreal	2.70	4.00 - 6.75op	2.89 - 6.75op	2.99	3.39	3.89	2.69	Home Trust Company	2.35	3.95	2.69	2.24	2.39	2.59	2.69
Bank of Nova Scotia	2.90	4.55 - 6.45op	3.29 - 6.50op	3.09	3.39	3.89	4.49	Investors Group Trust	n/a	4.20 - 6.50op	3.14 - 6.30op	3.09	3.39	3.89	2.84
Canadian Western Bank	-	4.00 - 6.45op	3.14 - 6.30op	3.04	3.65	4.20	4.74	MTCC	2.90	4.55 - 6.45op	3.29 - 6.50op	3.09	3.39	3.89	4.49
CFF Bank	-	-	2.69	2.24	2.39	2.59	2.69	Comtech Credit Union	2.45	6.20 - 6.40op	2.84 - 6.30op	2.89	2.95	2.99	2.89
CIBC	2.70	6.95op	2.84 - 6.35op	2.79	2.59	4.09	4.79	DUCA Credit Union	2.50	-	3.09 - 5.75op	3.00	2.99	3.09	2.54
Equitable Bank	-	-	3.14	3.04	3.65	4.39	4.64	First National Fin. LP	-	3.10	2.29	2.24	2.49	2.64	2.69
ICICI Bank Canada	2.75	-	3.15	3.65	3.64	3.69	3.69	Industrial Alliance/IAP	-	-	3.19	2.89	3.04	3.29	2.74
Manulife Bank	2.40	4.45	3.00 - 3.20op	2.94	2.84	2.79	2.89	Luminus Financial	3.25	-	3.25 - 6.25op	3.20	3.65	4.00	4.50
National Bank	n/a	4.40 - 6.70op	3.14 - 6.70op	3.04	3.39	2.74	2.89	Meridian Credit Union	2.40	4.00	2.84 - 6.30op	2.79	3.39	3.89	2.59
President's Choice Finan	2.70	-	-	2.79	3.34	3.99	4.44	PACE Savings & C.U.	-	5.00 - 6.70op	2.99 - 6.30op	2.69	3.49	3.99	4.74
Royal Bank	2.70	6.75op	3.14 - 6.75op	2.39	2.59	4.39	2.89	Parama Credit Union	2.65	-	2.80 - 2.95op	2.85	2.95	3.05	3.15
TD Canada Trust	2.60	-	2.99 - 6.30op	2.84	2.44	3.89	2.79								

*Also offer 7- to 10-year mortgages. op = open mortgage. n.a. = not available from company. ro=renewals only dashes (-) mean companies not quoting at present.